



ATTIX⁵
BACKUP PROFESSIONAL

DESKTOP AND LAPTOP EDITION

USER MANUAL v4.1

Table of Contents

1. Introduction	2
Overview	2
System Requirements	3
2. Installation	4
The Setup Wizard	4
3. Backup Client	7
How to Backup	9
Selecting Files for Backup	9
Filters	9
Manual Backups	10
Automatic Backups	10
Backup Resume	10
How to Restore	11
How to restore files and folders	11
Finding Files	12
Options and Settings	13
Account and Security	13
Connections	13
Disk Usage	14
Performance and Limits	14
Advanced Options	15
Additional Settings	16
Volume Shadow Copy Service	16
Outlook PST files	16
SnapShot Backup and Restore	17
Dynamic Profiling	17
Change Look & Feel	17
Backup on Shutdown	17
4. Security	18
Blowfish Encryption	18
SSL Communication	18

1. Introduction

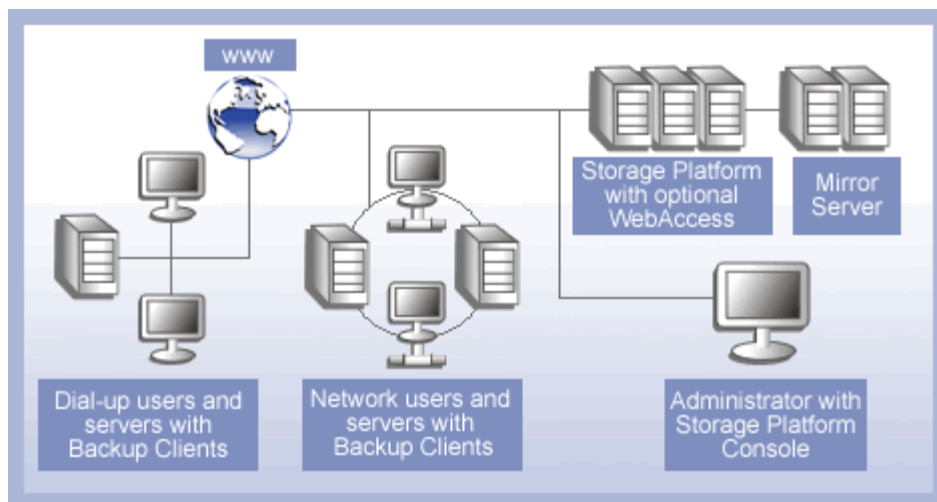
Congratulations on choosing Attix5 Critical Data Storage. We believe you will find Backup Professional to be the most secure, scalable and efficient solution in addressing the business risk associated with the protection of critical data in a distributed environment. If you experience any difficulty during the installation of Backup Professional, please contact your software provider.

Backup Professional Desktop and Laptop Edition (DL) is a remote storage solution that utilises client/server architecture to securely replicate data from the client device to a central data server. Data is compressed to minimise bandwidth utilisation and transferred using a secure SSL connection to the server. The data is stored in an encrypted format, using an encryption key known only to you.

Attix5 Backup Professional minimises risk, maximises productivity and allows businesses to regain control of their most valuable asset – their data.

OVERVIEW

Backup Professional Desktop and Laptop Edition manages the backup and retrieval of files and/or folders on your computer. Selected files are backed up to the Storage Platform that is installed on a remote server. This is shown in the following diagram:



Your Backup Client connects to a group on the Storage Platform during the installation. The Group Administrator oversees all group members, using the Backup Monitor. The Storage Platform administrator uses the Storage Platform Console to manage the entire Storage Platform, including all the different groups.

ATTIX⁵ **BACKUP PROFESSIONAL**

DESKTOP AND LAPTOP EDITION

SYSTEM REQUIREMENTS

Operating System

- Microsoft Windows XP Professional and Home
- Microsoft Windows 2000 Professional
- Microsoft Windows Millennium Edition (ME)
- Microsoft Windows 98 Second Edition

Processor

- Required: Pentium processor
- Recommended: Pentium III-500Mhz for more than 500 documents

Memory

Memory requirements mainly depend on the amount of files selected for backup.

- Required: 128MB RAM above operating system and application requirements
- Recommended: 256MB RAM above operating system and application requirements

Disk Space

- Required: 50MB plus space for local cache.
- Recommended: Amount of free space equal to the backup account limit. The local cache can be as large as the total size of all files selected for backup; a file selection of 100MB needs up to 100MB extra disk space for the cache.

Minimum Video Settings

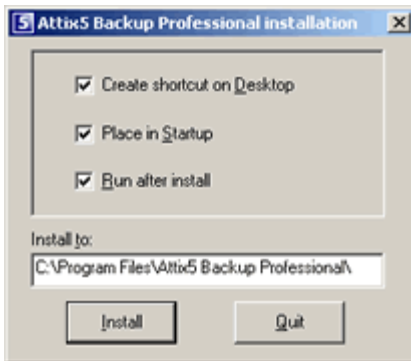
- 800 x 600 Resolution, 256 colours

Other Hardware

- Network interface card or a virtual network adapter card
- CD-ROM drive or Internet access to download and install the software

2. Installation

To install the Backup Professional Desktop & Laptop software, simply run the software installation file, provided to you by your backup administrator.

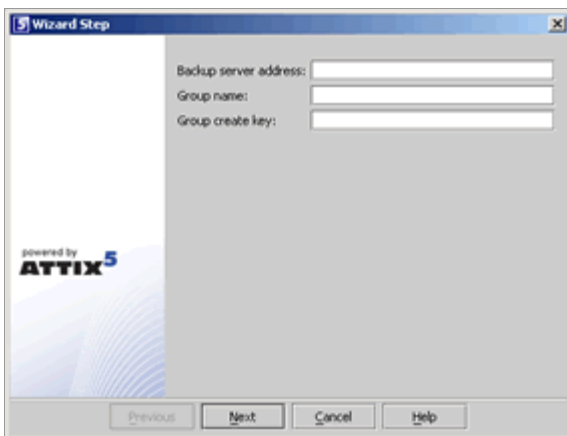


You have the option to decide whether you would like the Installer to create a shortcut on the desktop, place a copy in the Startup and if the Backup Client should run after the installation process has been completed. At the bottom of the window, **Install to** enables you to change the installation path. The default path is C:\Program Files\Attix5 Backup Professional.

Click on **Install** to continue. The Installer will extract the files and install the Backup Client. When the installation is complete, the message “Attix5 Backup Professional has been installed successfully and will now load. Click on OK to continue.” will be displayed. Click **OK**.

When you open the Backup Client for the first time, the Setup Wizard will start automatically. You need to create an account for the Client on the Storage Platform before you can initiate any backups.

THE SETUP WIZARD



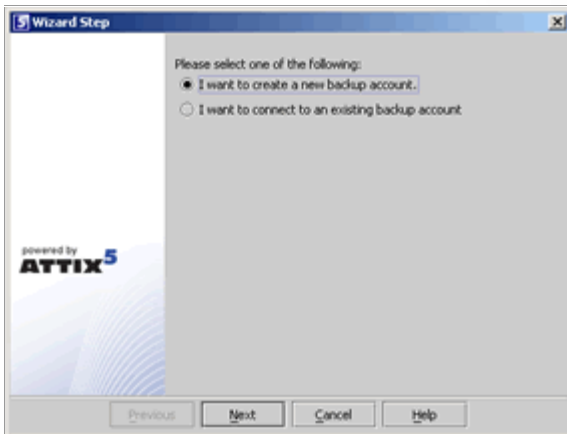
Step 1 of 8 (Optional)

This step will only be displayed if these settings were not included when your backup administrator created the deployment file. The Backup server address is the IP address or host name of the NameServer that authenticates you before you can backup or retrieve data. The Group name specifies which group you will join and the Group create key is needed in order for the client to create an account in the specific group.

Note: Ensure that you enter the correct settings. Contact your backup administrator if you are not sure about the settings.

ATTIX⁵ BACKUP PROFESSIONAL

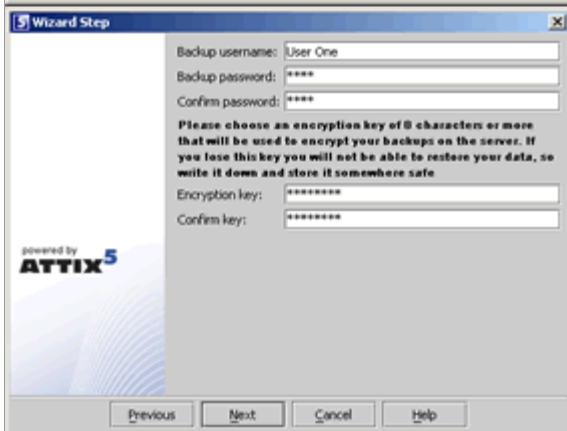
DESKTOP AND LAPTOP EDITION



Step 2 of 8

If you are installing the backup software for the first time, select “**I want to create a new backup account**”. If you have an existing account that you want to reconnect to, select the “**I want to reconnect to an existing backup account**” option. Click **Next** to continue.

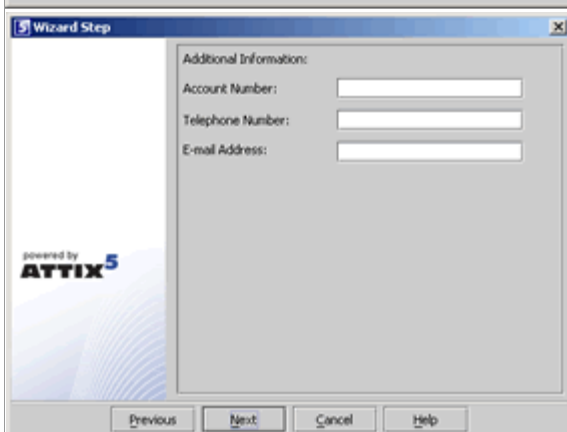
Note: You cannot connect from different computers to the same backup account. Each computer must have a separate account.



Step 3 of 8

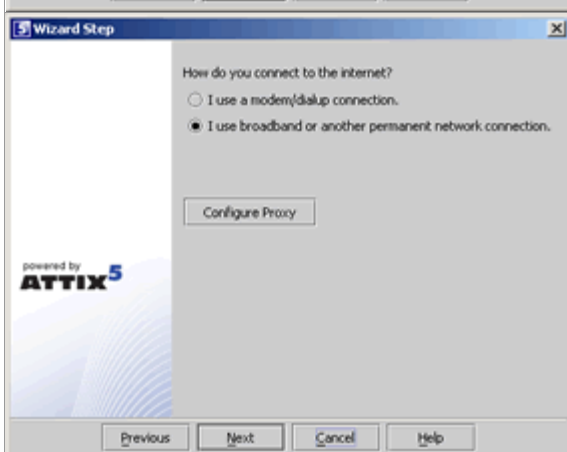
Choose and enter your backup username, password and encryption key. The backup username and password can consist of any keyboard combination between 4 and 20 characters. The encryption key can be any keyboard combination between 8 and 56 characters. Click **Next**.

Note: Do not forget your encryption key as you will not be able to retrieve your data without this encryption key.



Step 4 of 8 (Optional)

This step will only appear if your Backup Administrator enabled this feature when the deployment file was created. These fields are mandatory and you have to complete them before you will be able to continue. Click **Next**.



Step 5 of 8

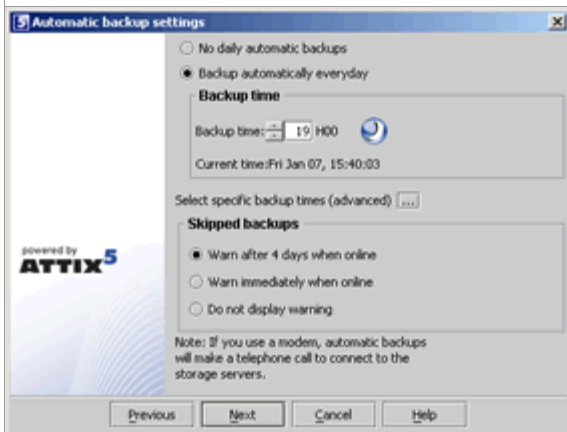
Select the connection that you want to use to connect to the Storage Platform.

Use the **Configure Proxy** button to specify any Proxy settings needed for communications to the Internet. Click **Next** to continue.

If you select the modem/dialup connection, the next step will prompt you to supply the connection that you want to use.

Step 6 of 8

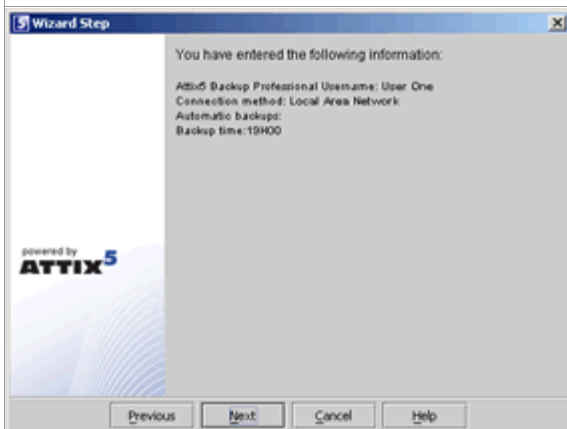
This step will only appear if you selected the “**modem/dial-up connection**” option in Step 5. Select the dial-up connection that you use to connect to the Internet and enter the dialup username and password. Click **Next**.



Step 7 of 8

In this step you can configure the backup schedule. The default backup time is 19h00. It is advised to backup at night when the computer is not in use. The computer (and the modem if you are using a dial-up connection) must be switched on at the time of scheduled backups. With **Skipped backups** the Backup Client can notify you if you missed any scheduled backups. Click **Next**.

Note: If you do not schedule any backups, you have to manually backup your data. We strongly recommend that you run automated backups.



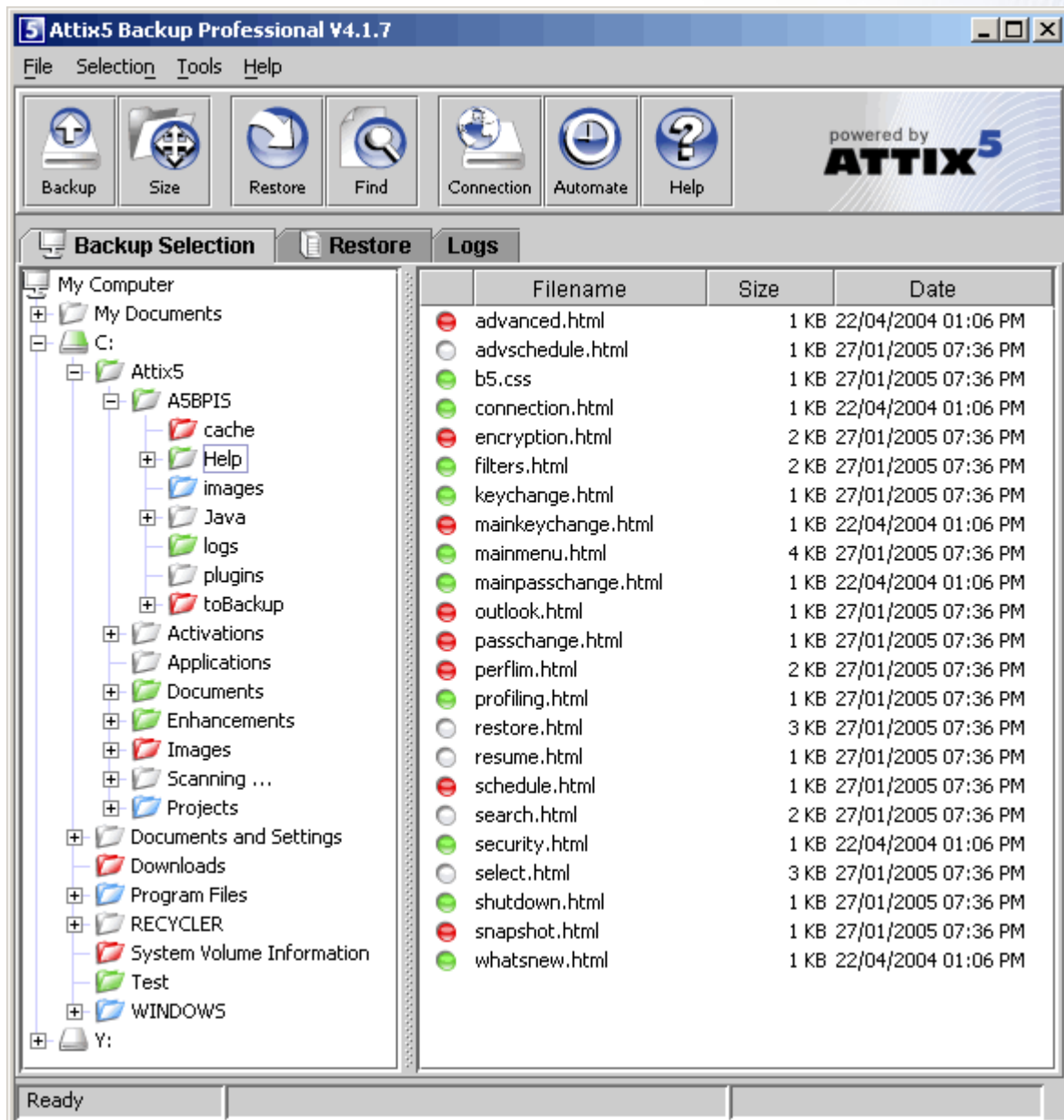
Step 8 of 8

Confirm that the information you supplied is correct, and click **Next**. The Backup Client will connect to the Storage Platform and configure your account. A message will be displayed to confirm that your account was created successfully.

Click **OK** to close the message box.

3. Backup Client

Backup Professional Desktop and Laptop Edition keeps your most valued data secure. It allows you to select files and initiate backups, and to restore lost or corrupted files. You can also find and restore files from previous backups and schedule automatic backups.




While you are using the Backup Client, you may select **Help** from the **Help** menu, should you require any help. This additional windowpane on the right of the window above, will guide you through the operation of the Backup Client. For an up-to-date version of this user manual, please visit <http://www.attix5.com/onlinehelp/dl>.

ATTIX⁵ BACKUP PROFESSIONAL

DESKTOP AND LAPTOP EDITION



If you open the Backup Client you will notice a new icon in the system tray. The  A5 Runner must be running to initiate scheduled backups. If you move the mouse pointer over the icon, it will display the next scheduled backup time. After you have selected files for backup, you can close the Backup Client. The A5Runner will stay active in the system tray and initiate any scheduled backups, which will backup your selected data to the Storage Platform.

If you right-click on the A5 Runner you will see the following options:


- Open Attix5 Backup Professional DL** To open the Backup Professional Client to modify your file selection initiate backups, restore files and configure the backup schedule. You can also open the Backup Client by double-clicking on the icon.
- Backup Now** With this option you can manually initiate a backup without having to open Backup Client first.
- Quit** To close the DL Runner. *Note: This will stop all automatic backups.*



If the Backup Professional Client is open but another program is active, you can right-click on the A5 Runner and click on **Show Attix5 Backup Professional DL**, or simply double-click on the icon. This will bring the Backup Client to the front.



How to Backup

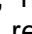


The next sections describe how to select files and folders for backup, how to add filters to folders to automate the file selection of certain file types, and how to backup your files to the Storage Platform.

SELECTING FILES FOR BACKUP

To select files that you would like to backup, click on the  **Backup Selection** tab. The folder structure of your computer is displayed in the left-hand pane. If you click on a folder, its contents will be displayed in the right-hand pane. Subfolders are only shown in the left-hand pane. Once a file or folder is selected for backup any changes, additions or deletions to that file or folder are automatically backed up.

To select an individual file: Browse to the individual file that you would like to backup. In the right-hand pane, right-click on the file and choose **Select** or click in the box next to the file. A selected file is displayed with a  green icon. To deselect a file you can either click on the box again or right-click on the file and **Deselect** it. Folders that have some files selected are displayed with a  green tint.

To select an entire folder: Right-click on the  folder and select **Include Folder**. You can also use the left mouse button to highlight the folder and then **Include** the folder from the **Selection** menu. Included folders are displayed with a  green folder. All files in the included folder and its subfolders are now selected for backup. Any changes made within this folder or its subfolders will automatically be included as well. To deselect a folder, right-click on the folder name and select **Deselect Folder** from the selection list.

To exclude a file or folder: If an entire folder is included but you want to exclude a particular file or subfolder, right-click on the file or folder and select **Exclude**. Excluded items are displayed with  red icons or  red folders. Folders that have been selected but have some files or subfolders excluded are green with a red  tint.

To verify the size of your backup, select **Calculate Size** from the **File** menu or click on the **Size** button in the toolbar. If your backup set is larger than your allocated limit you have to reduce the size of your selection. To remove files, right-click on a file that you want to exclude and click on **Deselect**. Alternatively, you can ask your backup administrator to upgrade your account limit.

If you do not want to wait for the next automated backup, you can select **Backup Now** from the **File** menu to manually start the backup process.

FILTERS

You can use a filter to automate the file selection of particular file types from a specific folder and its subfolders. For example, a ***.doc** filter will include all existing Word documents, as well as any new Word documents that may be added later. To add a filter to a specific folder, right-click on the folder, select **filters** and choose one of the available filters from the list.

A few filters have been provided for you to start with. You can create, modify and delete any of the filters. To modify a filter, select **Filters** from the **Selection** menu and click on **Edit filters**. Select one of the filters and **Add** or **Remove** any of the file types. The **New filter** option allows

ATTIX⁵ BACKUP PROFESSIONAL

DESKTOP AND LAPTOP EDITION

you to add additional filters. Supply a name that describes the filter and then enter the file type(s).

Example: AutoCAD users may want to only select their drawing files as the rest are generated by AutoCAD and do not need to be backed up. The filter could be called Drawings and the filter type would be *.dwg.

Files and folders that are included by applying a filter are displayed with blue icons and blue folders. You can exclude particular filtered files or folders by right-clicking on the file or folder and then selecting **Exclude**. A filtered folder with exclusions is displayed with a red tint. More than one filter can be applied to a specific folder. To remove filters from a folder, right-click on the folder, select **Filters** and clear the checkbox next to the specific filter(s) that you want to remove.

MANUAL BACKUPS

After you have selected the files and folders for backup, you can manually initiate the backup process by selecting **Backup Now** from the **File** menu or by clicking on the **Backup** button in the toolbar. You may close the Backup Client after you have started the backup process by clicking **Hide**. This will not cancel the backup process and you can at any stage open the Backup Client to view the progress of the backup. Backup log information can be viewed in the **Logs** tab. Backup entries are displayed in blue.

AUTOMATIC BACKUPS

The Backup Client can be scheduled to backup your selected files and folders automatically. Note that if you configure the Backup Client to backup at night, the computer must be powered, and you have to be logged in. The backup schedule can be changed by selecting **Automatic Backups** from the **Tools** Menu or by clicking on the **Automate** button in the toolbar. Backup logs can be viewed in the **Logs** tab. Backup entries are marked in blue.

Automatic Backups that are scheduled between 19h00 and 07h00 will start at the scheduled time but the Backup Client will randomly select a time between the start time and 07h00 to transfer your data to the Storage Platform. This reduces traffic peaks on the servers and makes it impossible for a third party to anticipate the exact time when your data will be transferred to the Storage Platform. Automatic Backups scheduled during daytime will start at the scheduled time and immediately transfer your data to the server.

Note: You are advised not to disable automatic backups as you will then have to manually backup your files.


BACKUP RESUME


The Backup Client can try to resume a backup, if the previous request failed for whatever reason. If you select **Backup Now** from the **File** menu or you click on the **Backup** button in the toolbar and the previous backup was not successful, the Backup Client will prompt “Do you want to resume the failed backup?” If you select **Yes**, the Backup Client will try to continue from where the process failed during the previous backup. Select **No** to initiate a new backup or **Cancel** to return to the Backup Client.

How to Restore

The next section describes how to select the files that you want to restore, how to search for specific backed up files, and finally how to restore files from the Storage Platform.

HOW TO RESTORE FILES AND FOLDERS

Open the  **Restore** tab. From this tab, you can gain access to your backed up files. Your latest backup is shown in the **Last Backup** folder. If you expand the **Previous Backups** folder, the Backup Client will connect to the Storage Platform and retrieve a list of all previous backup dates.

Select the files and/or folders you want to restore. To select a single file, right-click on the file and click on **Select** or you can click in the box next to the file. To select an entire folder, right-click on the folder and then choose **Select folder**. Selected files are displayed with  green icons. To start the restore process, select **Restore** from the **File** menu or click on the **Restore** button in the toolbar. *Note: Automatic backups are disabled during the restore process.*

The Backup Client will prompt for a restore location to where the file(s) must be restored. If you select **Original location**, the files will automatically be restored to the same location from where they were backed up.

Note: If you choose this option, the restored files will overwrite any existing files with the same name in that location. You will be warned before the Backup Client overwrites any files.

If you do not want to overwrite the current copy of these files, select the **Folder** option. The default path is C:\Program Files\Attix5 Backup Professional\Restore. You can also **Browse** to another folder if you want to restore the files to a different location.

Restore Options:

Recreate directory structure	By default, the folder structure is recreated in the restore folder. If you want all files to be restored to one location, uncheck the Recreate folder structure option. <i>Note: If you are restoring files from different folders with the same filename, you must recreate the folder structure or they will overwrite each other.</i>
Overwrite files	Enable this option if you do not want the Backup Client to prompt you before overwriting an existing file.
Use compression (faster over the Internet)	Tick the Use compression option to enable compression. With this setting enabled, the Storage Platform will compress the files before transferring them to the Backup Client. <i>Note: You are advised to always enable this setting if you have a slow connection to the Internet as the files are smaller with this option enabled.</i>

Restore log information can be viewed in the **Logs** tab. Restore entries are displayed in green.

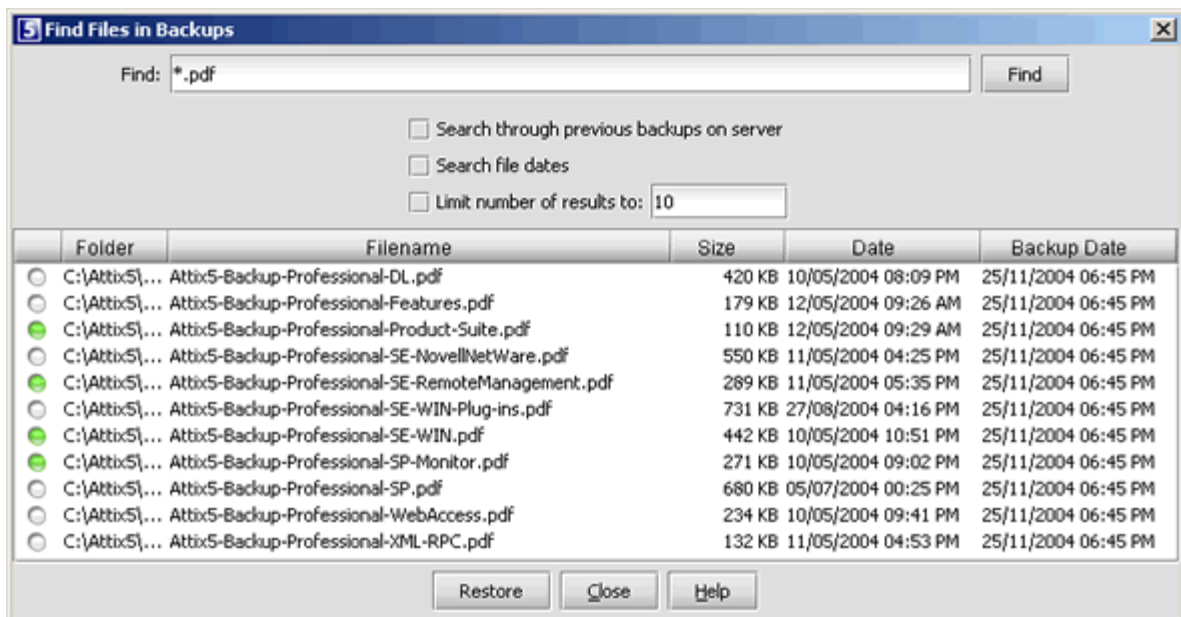
FINDING FILES

The **Find files in Backups** option enables you to search through your previous backups to find a specific file. You have the option to do a local search from your last backup, or you can connect to the Storage Platform to search through your previous backups.

To search for a file from your latest backup, select **Find files in backups** from the **File** menu or click on the **Find** button in the toolbar. Enter the filename in the textbox and click on **Find**.

Example: If you enter *help* in the textbox, the Backup Client will display a list of all backed up files from your last backup that contain *help* in either the filename or the folder.

Note: You can use the ** and ? wildcards for advanced search queries to find the files that you are looking for.*



To search for files from previous backup sets, enable the **Search through previous backups on server** checkbox.

File dates can also be specified and you can and limit the number of results that must be displayed. **Note:** *The Backup Date is used if you enable Search file dates and not the file create or file modified dates.*

To restore the located files, select them individually and then click on the **Restore** button.

Options and Settings

From this **Tools** menu option you can view and configure the primary Backup Client options and settings. To open this section, select **Options...** from the **Tools** menu. The various options and settings are grouped according to their functions and displayed in different tabs.

Note: Please read through this section carefully before you change any of these settings. Incorrect settings could cause serious problems or even stop the Backup Client from backing up your data.

ACCOUNT AND SECURITY

Account Information

This section displays your backup account information as it is stored in the Storage Platform. You can use the **Update Limit** button to update your account limit from the Storage Platform. This tool is useful to verify that your account limit has been modified after requesting a change from your Backup Administrator.

Account Setup

If you need to change your password or encryption key, select either the **Change Password** or **Change Encryption Key** buttons. Changing your encryption key involves intensive processing on the Storage Platform and may take several minutes. It should therefore not be done unless your encryption key was compromised.

Security Settings

The Security window allows you to select whether the Backup Client should remember the backup account password when running a backup or a restore. There are three options available:

- **Remember password for backup and restore:** The Backup Client remembers the user password when doing a backup or restore. This is the default setting.
- **Prompt for password on restore:** The Backup Client prompts for the user password during the restore process.
- **Prompt for password on backup and restore:** The Backup Client prompts for the user password during a backup or restore process. Automatic backups are not possible with this setting.

CONNECTIONS

Connection Settings

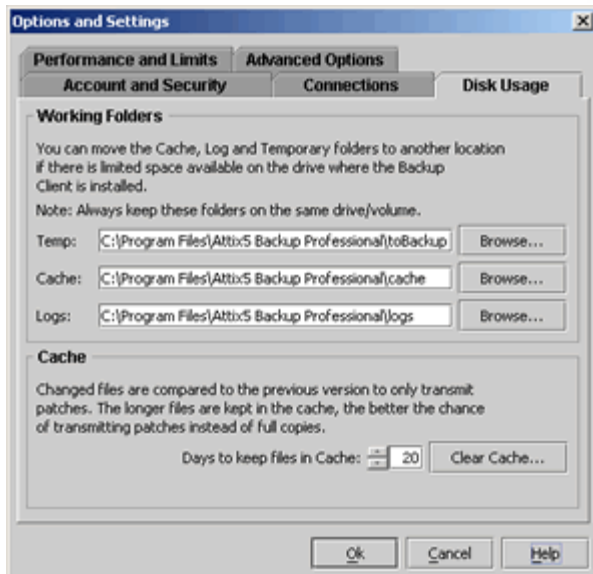
In this section, you can change the connection that the Backup Client must use to connect to the Storage Platform. You can choose between a network/permanent or dial-up connection.

The **Dial-up Settings** button is enabled if you select the Dial-up option. Click on this button to select an existing dial-up connection configured on the computer, and supply the username and password for that Internet connection.

Proxy Server

Enable the **Use a proxy server for you network or dial-up connection** checkbox if you connect to the Internet via a proxy server, and supply the necessary information.

DISK USAGE



Working Folders

If you have limited space on the drive where the Backup Client is installed, you can move the Cache, Logs and Temporary folder to another drive. The Temp folder is used for temporary workspace when the files are patched, compressed and encrypted, the Logs folder stores all backup and restore logs, and the Cache folder keeps a local, compressed and encrypted, copy of the selected files for a specified amount of days.

Note: Always keep these folders on the same drive. If you move these folders to a network share, please ensure that the Backup Client has the correct permissions to reconnect to that share.

Cache

When modifications are made to a file, the Backup Client only transmits the changes to that file, as opposed to transmitting the complete file again. This is accomplished by keeping a compressed copy of the file in a local cache and then using a sophisticated patching technique to extract the difference between the file in the cache and the one ready to be backed up.

Files are only kept in the cache for a certain amount of days. Files are added to the Cache folder if the file was modified within the **Days to keep files in Cache** window. Once a file has been flushed from the cache, a full copy must be backed up when any modifications are made to the file. The longer files are kept in the cache, the better the chance of only transmitting patches instead of full copies and thus reducing the amount of data that needs to be transmitted. If you have limited disk space, you may want to consider shortening the time files are kept in the cache.

Note: If you select 0 days, patching is disabled, any files in the Cache folder will be deleted, and complete files are backed up to the server during each backup.

To delete the current cache, use the **Clear Cache...** button. If you delete the cache, full copies of your selected files will be re-sent to the server during the next backup. You may notice that the Backup Client will log the message **Doing monthly cache cleanup** once a month. This maintenance task is to ensure that the cache folder is up to date by deleting any files that fall outside the **Days to keep files in Cache** window.

PERFORMANCE AND LIMITS

Processor Usage and Disk Access

The Backup Client uses a fair portion of the available processor power to patch, compress and encrypt files while during the backup process. If you use the computer at the same time, you may experience some performance deterioration. You can lessen this effect by lowering the **Processor Usage**.

ATTIX⁵ BACKUP PROFESSIONAL

DESKTOP AND LAPTOP EDITION

Disk Access is another setting that you can modify to limit performance deterioration. If this setting is set to high, the Backup Client will continuously use all available disk access to write to the disk, ensuring that the process completes as fast as possible. The process will take longer if you lower this setting but your other applications will still function without any interruptions.

Limits

Outgoing transfer limit - The outgoing transfer bandwidth can be limited (in kBytes/second) in case you need to allocate only a certain amount of bandwidth to the Backup Client.

Backup size restriction - You can limit the total amount of data that may be transferred during each backup. Note: If you enable this option, it may take several backups before all your files are backed up to the Storage Platform. This feature is especially useful if you have a poor Internet connection and you encounter problems with transferring large backups.

ADVANCED OPTIONS

Options and Retries

The Backup Client can be configured to **Always connect to the Storage Platform** during each backup to update its last backup date stamp, even if there were no changes made to the backup set. With this setting enabled, the Storage Platform will always be up to date with the latest backup date.

Enable Volume Shadow Copying to backup locked files enables you to backup locked files without using third party open file management software. This is currently only available on Windows XP and Windows 2003 Server Operating Systems.

Number of Backup/Restore attempts before cancelling - By default, the Backup Client tries to connect to the Storage Platform four times before cancelling the backup process. If you have a poor connection to the Internet, you may want to consider increasing the number of attempts. The backup will continue from the previous point of failure. It will not resend the entire backup.

Connection Retries - By default, the Backup Client will try to reconnect to the Storage Platform after 60 seconds, should the connection be dropped. This setting enables you to increase/decrease the duration between the retries.

Socket Timeout - The socket timeout is, by default, 120 seconds. If the Backup Client is connected to the Storage Platform and there is no communications between the two, this amount (in seconds) is the duration that the Backup Client will stay connected before dropping the connection.

Logging Level

You can specify the level of information that must be included in the log files. Choose between:

- Log all messages
- Suppress detail messages
- Log errors and warnings

Additional Settings

The **Tools** menu provides you with various options and settings that you can modify to enhance and streamline your Backup Client. You can also modify your account settings from this menu.

VOLUME SHADOW COPY SERVICE

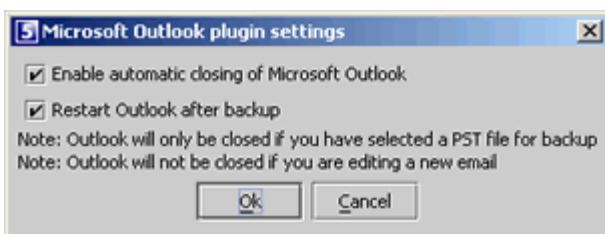
Applications often keep their data files locked if the application is running. This is usually a problem when trying to backup these files as the application does not allow the backup agent access to the file to determine the changes since the last backup.

Microsoft Volume Shadow Copy Service (VSS) provides a solution by automatically creating a snapshot of the data at any given point in time without any interruption to the application, and without the need for any third party software.

VSS is currently available on Windows XP and Windows 2003 Server operating systems and enabled by default in the Desktop and Laptop Edition backup client, if the client is installed on Windows XP. If you would like to disable VSS, select **Options...** from the **Tools** menu and then the **Advanced Options** tab. Disable VSS by removing the check in the checkbox next to **Enable Volume Shadow Copying to backup locked files**.

Note: VSS enables you to backup e.g. your Outlook PST files without having to close Outlook.

OUTLOOK PST FILES



Note: You do not have to use the Outlook plug-in if you are using Windows XP; the PST file can be backed up using VSS. The Outlook plug-in will automatically be disabled if VSS is available.

If you include any Microsoft Outlook PST files in your backup selection you can enable the Backup Client to close and restart Outlook during the backup process. PST files are locked if Outlook is open so the Backup Client will skip this file as it cannot access the file to determine the changes since the previous backup. *Note: Outlook will only be closed if you have a PST file selected and it will not close Outlook if there are any unsaved emails open.*

To enable these settings select **Plugins** from the **Tools** menu and then click on **Outlook**. Enable the options that you want and click on **OK** to save the settings.

You will be prompted whether you want to save any unsaved e-mail messages during the backup process. A 30 second delay has been implemented so that you can save these messages and close Outlook. If you do not close Outlook within this time, the backup process will continue and the file will be skipped.

SNAPSHOT BACKUP AND RESTORE

SnapShot Backup and Restore enables you to create a backup of your selected files on a local SnapShot server within your Local Area Network (LAN). This SnapShot server will then be physically moved to the server running the Storage Platform where the data will be transferred.

The Storage Platform is usually hosted at a Data Centre off site and this feature enables the backup administrator to reduce the initial backup window if there is a large amount of data that must be backed up.

A similar procedure can be followed when restoring a large amount of data, for example, during a Disaster Recovery.

Note: Only the backup administrator should change these settings. Instructions for using this feature can be found in the *Backup Professional Storage Platform Manual*.

DYNAMIC PROFILING

Dynamic Profiling enables your Backup Administrator to propagate certain client side settings from the Storage Platform to your Backup Client. Note: These settings take priority over any settings specified in the Backup Client. These settings include:

- Changing the backup schedule
- Specifying system file exclusions
- Adding additional filters to the filter list

When the Backup Client connects to the Storage Platform, it will receive a list of any Dynamic Profiling settings specified by the Backup Administrator and these changes will be implemented in the Backup Client. If you modify any of these settings with Dynamic Profiling enabled, it will revert back to the Dynamic Profiling settings during each backup.

CHANGE LOOK & FEEL

You have the option to change the look and feel of the Backup Client. From the **Tools** Menu, go to **Change look & feel** and select one of the available options.

BACKUP ON SHUTDOWN

Backup Professional can automatically initiate a backup when a user restarts or shut down the computer. This feature is enabled by the backup administrator and cannot be modified from the Backup Client.

When you initiate a Shut Down or Restart your computer, a dialogue box will prompt **Do you want to backup now?** Click **Yes** to backup or **No** to continue with the shut down process. A progress window will display the backup process on screen. After the completion of the backup a message **Windows is shutting down. Click button to restart** will be displayed with a timer counting down from 10 seconds. Click on the button to restart the machine or wait for the machine to shut down. *Note: The backup administrator can configure Backup on Shutdown to be initiated without any user intervention from the client side.*

4. Security

Attix5 Backup Professional uses a combination of Blowfish encryption and SSL secure data transmission to ensure the safety of your data.

When the Backup Client has to transfer data to the Storage Platform, it connects using a secure SSL (1024 bit RSA key exchange, 128 bit RCA stream cipher and SHA-1 integrity checking) connection to transfer the data. Signed SSL certificates and Certificate Revocation Lists (CRLs) are used to verify server integrity.

Data is stored using 448-bit Blowfish encryption to encode the data on the Server. This is considerably greater than the encryption used for Internet banking and online credit card transactions.

Your encryption key is seen as a passphrase by the Storage Platform. A random encryption key is automatically generated when any account is created and this random key (and not the passphrase specified by you) is used to encrypt your files.

The encryption key is protected by the passphrase (your encryption key) and without this passphrase you cannot decode the actual encryption key. When you change the encryption key in the Backup Client, the actual key is decrypted and re-encrypted with the new passphrase.

The data is never touched. All data since the initial backup is encrypted with the same random encryption key even when the passphrase is changed. If you change your encryption key, you do not have to remember the previous encryption keys for future restores – the Backup Client will be able to retrieve the data from the Storage Platform.

Your encryption key is not stored anywhere on the Storage Platform, and is only known to you. If you forget this encryption key, it will render your data unrecoverable.

Security standards and techniques employed by Attix5 Backup Professional are audited by **PricewaterhouseCoopers** to ensure that sensitive corporate data remains safe from prying eyes when transferred over the Internet or stored on a server.

BLOWFISH ENCRYPTION

Blowfish is an encryption algorithm. It is a symmetric block cipher, which uses a variable-length key from 32 bits to 448 bits. Backup Professional uses the maximum strength 448-bit key.

SSL COMMUNICATION

The Secure Sockets Layer (SSL) is a commonly used protocol for managing the security of data transmission. Attix5 Backup Professional makes use of the SSL protocol (1024 bit RSA key exchange, 128 bit RC5 stream cipher and SHA-1 integrity checking) for secure communication between the Backup Clients and the Storage Platform, including data transmission.